

# Inspiring outdoor living



**KönigOutdoor**





# KönigOutdoor

KönigOutdoor is a sophisticated high-end solution for outdoor living. It combines luxurious sintered stone surfaces with a durable weatherproof structure to provide the functionality of an indoor kitchen, outdoors. Our goal is to match our unique design with market leading appliances and finishes, creating a wonderfully refined space to come together with friends and family.

KönigOutdoor is available in a range of conveniently designed modules, providing a variety of configurations to satisfy most requirements. Internal compartments have hygienic wipe clean surfaces and fittings such as handles, hinges and drawer runners are from one of the world's leading furniture component manufacturers who use only the finest materials for their proven product. Alongside our modular units, we also offer bespoke services including custom unit sizes. (See page 8 for more information).



## Sophisticated Sintered Stone ▶

All doors, panels and work surfaces are covered with market leading ceramic slab by Neolith. Featuring characteristics such as high resistance to scratching, temperature, staining and UV Light. Your outdoor kitchen will look great for years to come.



## ◀ Weatherproof Structure

All carcasses are made using high quality weatherproof material, providing a 25 year warranty against damp ingress. Strong, weatherproof levelling legs support them even when loaded.



## Design ▶

Our modular units can be configured to meet the requirements of most specifications. Combine that with market-leading specialised outdoor appliances to create a truly superior outdoor living space.







450 unit  
W 450 x D 650 x H 920mm  
Shown as left hand option



Gas locker  
W 800 x D 490 x H 795mm  
Stand alone unit

## Modular Units

Our modular units have been conveniently designed to provide a variety of configurations and are free standing so simply require a flat and level surface for installation. Each order is expertly crafted in our factory to create your complete outdoor kitchen unit which is then easily reassembled onsite.

### 1 Worksurface

Every kitchen is supplied with a matching 12mm thick sintered stone worksurface. Your worksurface will be jointed (if necessary) in the most aesthetically pleasing way to suit your design.

### 2 End panels

Sintered stone end panel provide a smart solution when the end of your module is visible.

### 3 Back panels

If your outdoor kitchen is freestanding, a sintered stone back panel can be added. All burner units have a vented back panel to allow air flow.





600 unit  
W 600 x D 650 x H 920mm  
Shown as left hand option



900 unit  
W 900 x D 650 x H 920mm



900 BBQ unit  
W 900 x D 650 x H 920mm  
Shown with Fulgor FOBQ HL 800 X3 burner grill



1200 corner unit  
W 1200 x D 650 x H 920mm  
Shown as right hand option



1125 BBQ unit  
W 1125 x D 650 x H 920mm  
Shown with Fulgor FOBQ HL 1000 X 4 burner grill



Log store  
W 900 x D 650 x H 920mm  
Shown with 2 KonigOutdoor end panels

All width and height measurements are unit size only excluding doors, panels and worktop. All height measurements allow for the plinth.

## 4 Plinths

Plinths come in a black granite finish as standard. Matching sintered stone plinths are also available.



## 5 Drawers

For convenient storage, an internal drawer can be added in place of the standard shelf into the 450 or 600 unit.



## 6 Handles

We offer a variety of weatherproof handles in a range of styles and finishes.

## 7 Overhangs

Extra deep overhangs of 250mm can be specified on any set of units to provide a stylish bar-style seating area for your guests.





# Finishes

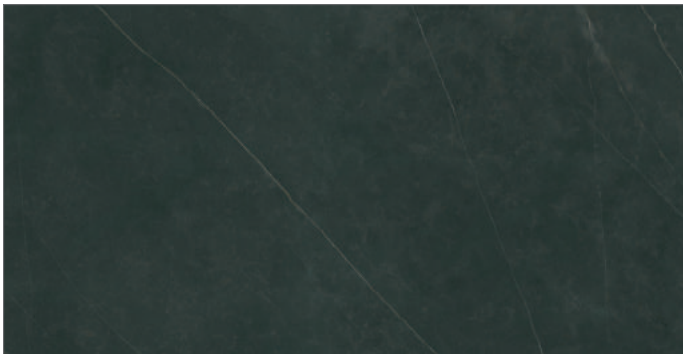
We have teamed up with market leading brand Neolith to provide the ultimate in high-end design for the outer surfaces of our modular units. Choose from a selection of popular finishes from classic marble to contemporary concrete.



Calacatta Silk



Iron Grey Satin



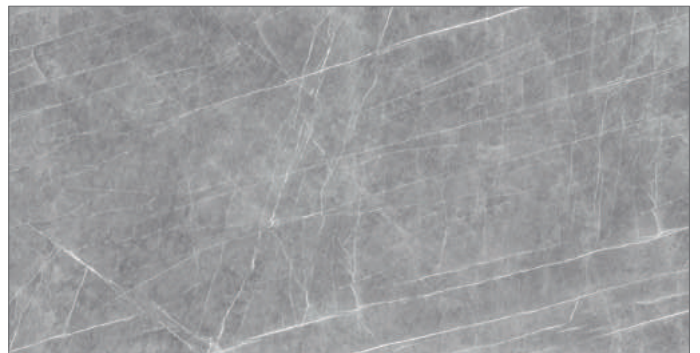
Calatorao Silk



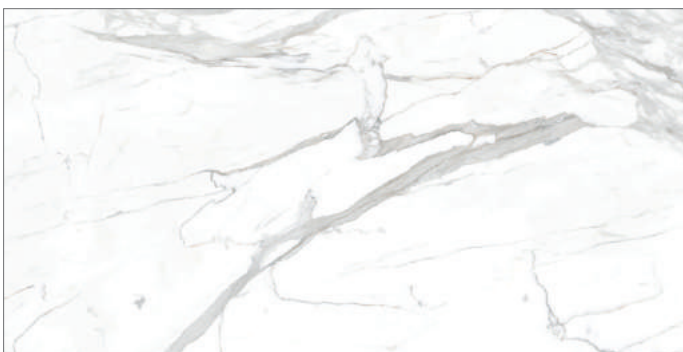
Basalt Grey Satin



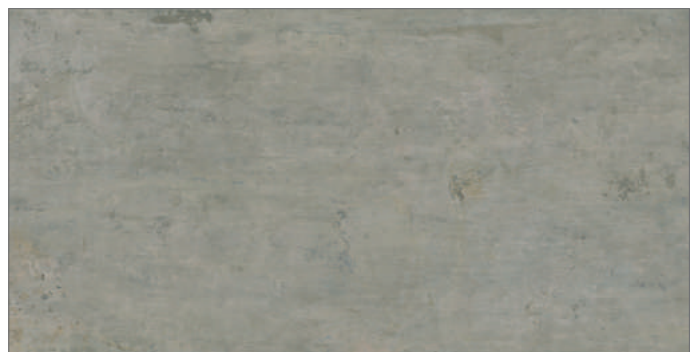
Strata Argentum Riverwashed



Zaha Stone Silk



Estuario Silk



Beton Silk





## ◀ Refrigeration

The perfect addition to any outdoor entertainment area, we offer refrigeration, freezers and ice makers from well-known Italian brand Vitrifrigo as well as beautiful glass fronted fridges from Australia's Beefeater.

**VITRIFRIGO**  
COOL AND BEYOND



## Outdoor Grills ▶

Fulgor pride themselves on manufacturing simple to use, efficient and aesthetically pleasing products. With over 70 years' experience we are delighted to partner with Fulgor Milano to provide elegant solutions for outdoor cooking. We also supply grills from Beefeater.

**FULGOR**  
MILANO



## ◀ Pizza ovens

Add an elegant modern touch to your KönigOutdoor kitchen with a Pizza Oven from experts Alfa Forni. Alfa have been making outdoor ovens since 1977 and really understand the importance of combining style and substance. We supply the popular Nano, available as either gas or wood fuelled in a stylish Copper finish.



**ALFA**





# Bespoke designs

Convenient modules will satisfy most design requirements, but KönigOutdoor offers alternative solutions for those seeking very individual outdoor spaces to entertain and relax. For that something special, we offer a design and build service to create a unique outdoor kitchen to your particular specifications.

After an initial consultation we will provide a comprehensive design proposal, including a detailed quotation and colour renders of your project, costs for this design service are offset against order.

We recommend this service for larger projects, particularly those requiring mains gas or water supply, or where units are to be custom fitted between an existing structure. Please talk to your dealer if you would like more information.



**KönigOutdoor**

[www.konigoutdoor.co.uk](http://www.konigoutdoor.co.uk)

[info@konigstone.co.uk](mailto:info@konigstone.co.uk)

Tel: 0333 577 2903